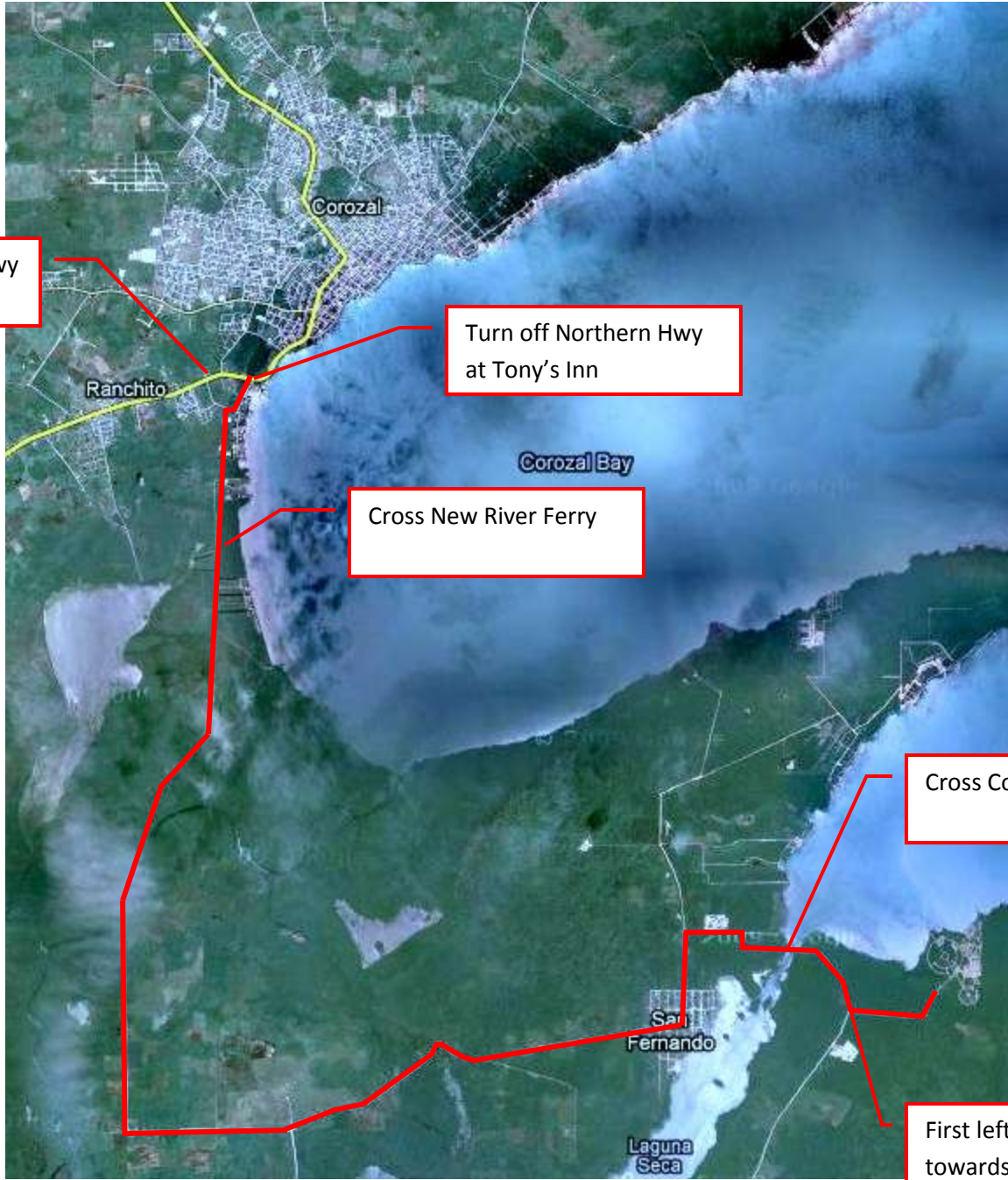


## Driving Directions to Orchid Bay from Corozal



Turn off Northern Highway at Tony's Inn  
Follow Orchid Bay signs 3.3 miles to Pueblo Nuevo Ferry at New River (cross the ferry)  
Continue 2.2 miles to tee in road and turn left towards copper bank (follow Orchid Bay sign at tee)  
Continue 2.4 miles to turn left in Copper Bank at signs for Orchid Bay and Cerros Ruins  
Continue 0.5 miles to Laguna Seca Ferry (cross the ferry)  
Continue 0.6 miles to first left turn into Orchid Bay access road (sign)